

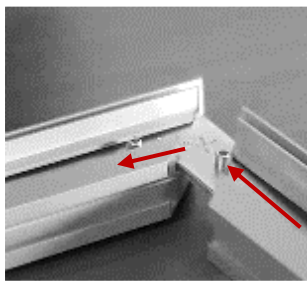
INSTRUCTIONS

FRAME FREE STANDING DOUBLE 44 mm

ITEMS DELIVERED

- 4 profile pieces (if you ordered feet: 3 profiles without slot, 1 profile with outer slot)
- 4 locks
- 1 allen key
- (feet)
- (textile print with rubber lip all around)

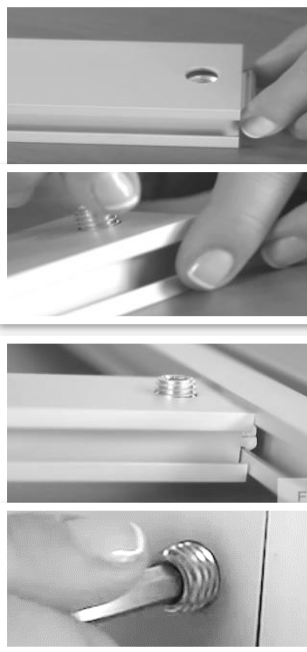
STEP 1



Connect corner

Take a profile piece without slot and put the lock in the according rail in the profile. Put another profile piece without slot on the lock. Connect 3 profile pieces without slot in this way.

STEP 2



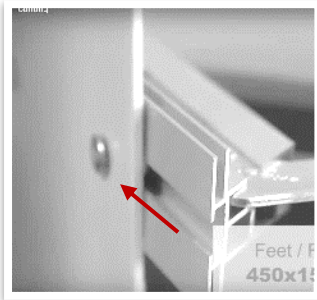
For frames ≥ 2 m: insert stabilizer

This could also be done after the frame mounting, but it is easier if only 3 profiles are connected. Prepare the stabilizers by inserting the locks in the stabilizer, so the holes of the lock and the stabilizer are above each other.

Now put the stabilizer in the frame while the lock is inserted in the inner slot of the profile. Then tighten the screws of the lock.

INSTRUCTIONS

STEP 3

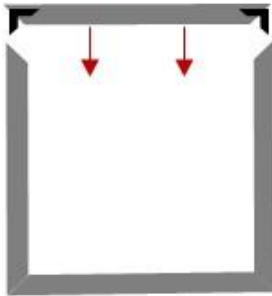


Attach feet (if ordered)

Prepare the feet by inserting the screws in the holes and put a flat washer and a slot nut on the other side.

Slide the feet with the slot nut in the outer nut of the last profile. Then fix the screws with an allen key.

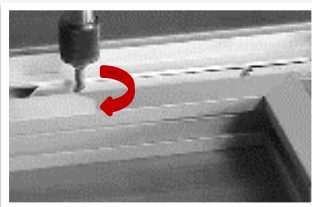
STEP 4



Connect all profiles and corners

Equip the last profile piece with the 2 left locks and put it on the 3 already mounted profiles.

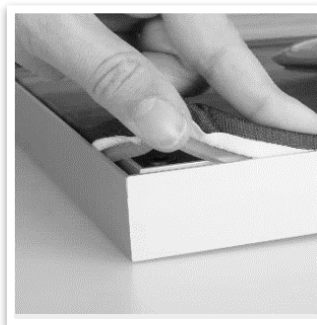
STEP 5



Tighten all locks and screws

Put the frame on an even ground and tighten all screws of the locks with the allen key.

STEP 6



Insert textile

Insert the textile with the rubber lip into the according notch of the frame. Make sure that you hold the rubber lip right, since otherwise the textile will not fit in the frame: Fold the rubber lip slightly inwards (90°) and put it into the notch (see image).