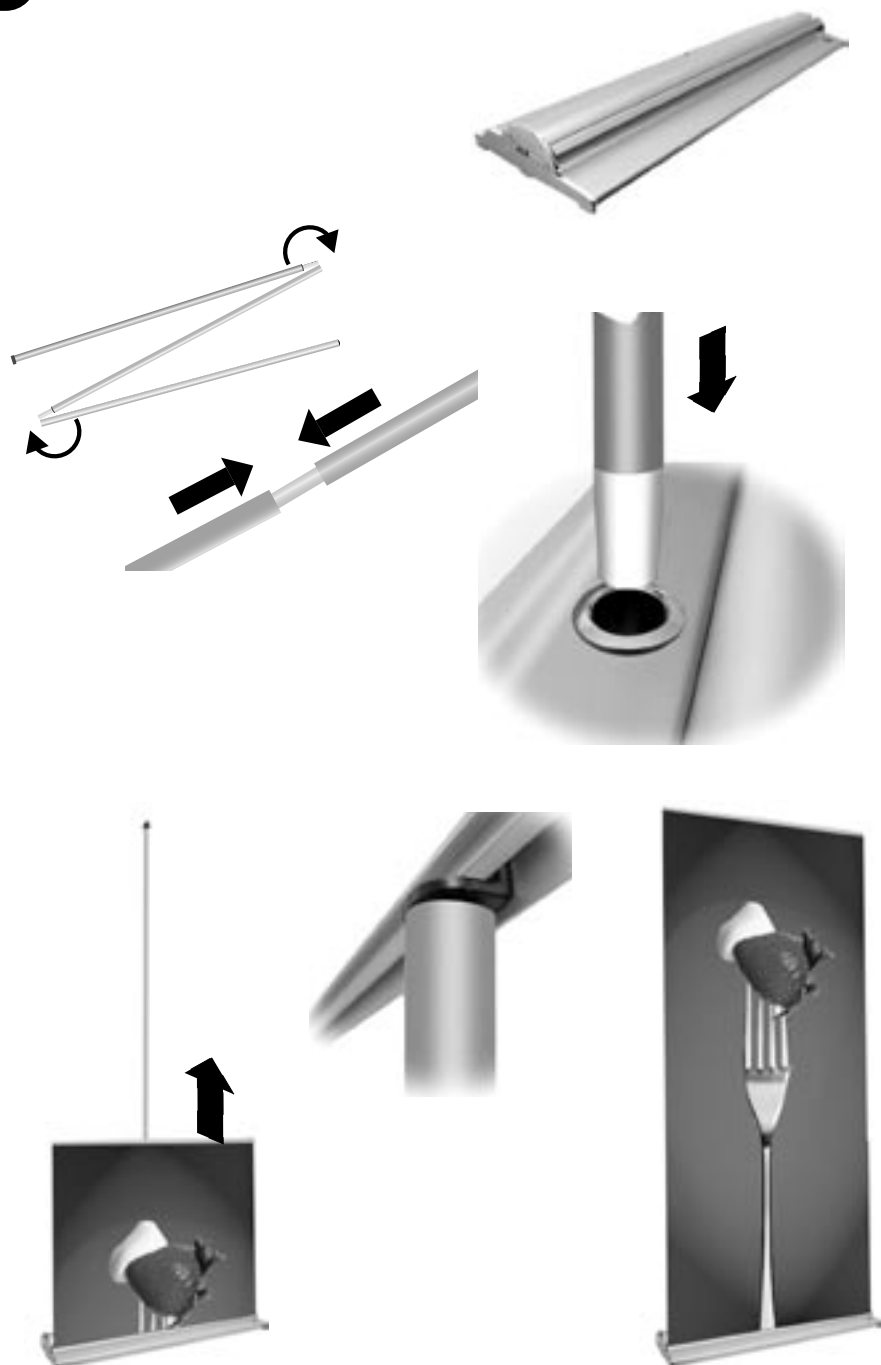
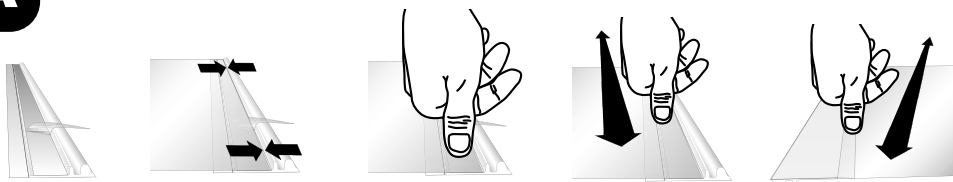


**A****Functioning test****Panelmått • Panelsizes**

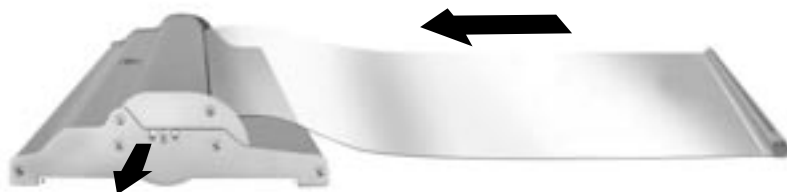
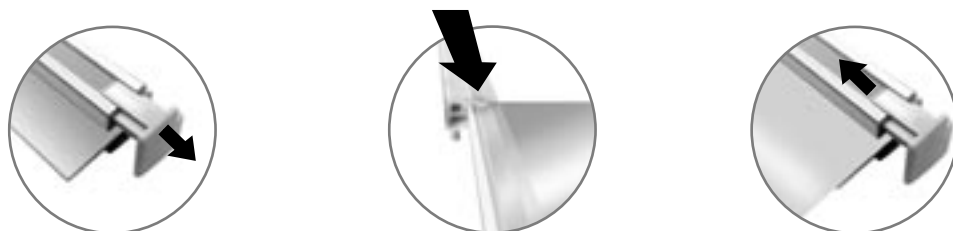
Art.nr 4800B4800 Roll-Up 850  
 Panel measurement 850mm x 2400mm. Visible height 2150mm.

Recommended panel thickness: 440  $\mu$

**expolinc**  
 ROLL UP  
 PROFESSIONAL

**A****Preparing and mount the panel**

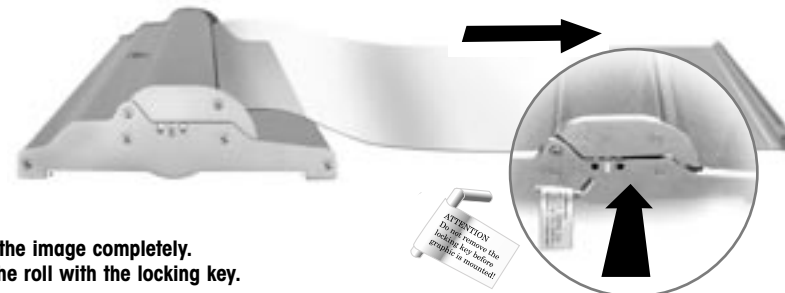
Remove a small part of the protective liner on the front tape.  
 Fix the panelstrip onto the image and adjust the image towards the strip.  
 Remove the remaining part of the protective liner. Press the image firmly onto the panelstrip.  
 Turn the image around and do the same thing with the security tape. (Not locking version).



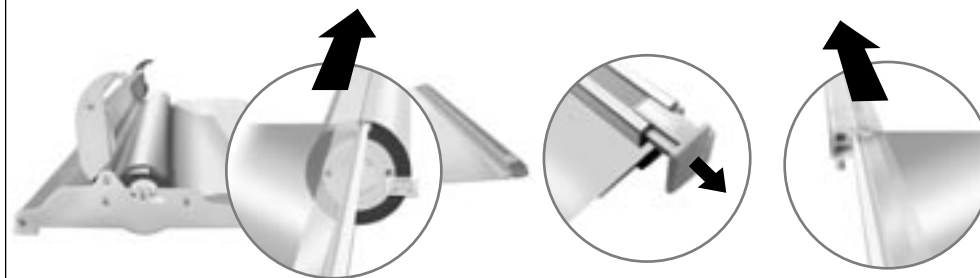
Slow down the image with one hand when pulling out the locking key.  
 Let the image slowly roll into the system.



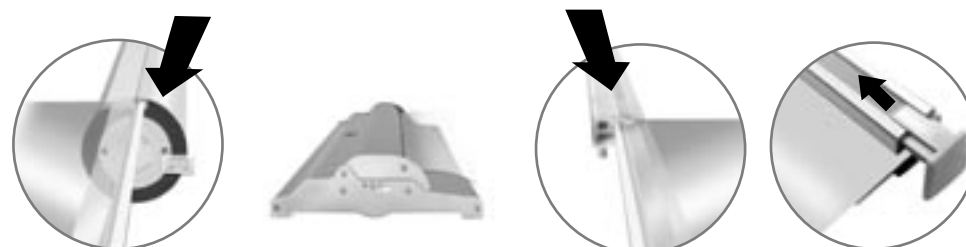
Replace the locking key underneath the system and  
 make a functioning test. (see item 3 last page).

**A****Change the panel**

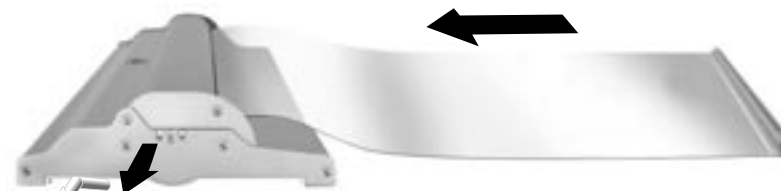
Pull out the image completely.  
 Secure the roll with the locking key.



Take out the roll and remove the existing image by pulling off the roll and the top profile.



Mount the new image as in position 1.



Slow down the image with one hand when pulling out the locking key.  
 Let the image slowly roll into the system.