

The complete solution



HP large format printing materials
[Product Guide](#)



Congratulations valued customer on taking the first step on your HP Media journey!

HP Large Format Printing Materials were created and designed for optimal performance on all HP Latex printers.

Each product features a unique construction to ensure excellent print output, colour vibrancy, as well as quick and easy installation. Take a look through this comprehensive product guide to see how the HP Media portfolio, could help you grow and elevate your business!





HP large format printing materials

Product Guide 2024

Automotive Films

HP Auto Gloss Glide GP	4
HP Auto Gloss / Matte Laminate	5

Premium Polymeric Films

HP Optimal Gloss Air GRP	6
HP Optimal Gloss / Matte Laminate	7

Intermediate Polymeric Films

HP Prime Gloss Air GP	8
HP Prime Gloss / Matte Laminate	9

Hi-Tack Film

HP Grip Gloss CP	10
------------------	----

Window Film

HP Vision Etch CP	11
-------------------	----



The complete solution

Automotive Film



HP Auto Gloss Glide GP

Soft, high-performance wrap adhesive vinyl

HP Auto Gloss Glide GP is a soft 50-microns, high-performance adhesive vinyl for fleet and vehicle applications. Easy installation with specially formulated adhesive to glide the vinyl into place for flat and single-step recess vehicle and fleet applications. Air-release liner for quick installation. Help save time and gain efficiency with ICC profiles that help you quickly get the color you need. Capture vibrant graphic detail and display brilliant color and full opacity with this grey-back, adhesive vinyl. From event signage to fleet graphics, achieve a high-quality look with this versatile, easy-to-handle, permanent, conformable polymeric self-adhesive vinyl—ideal for a wide range of indoor and outdoor applications.

Liner	160 g/m ² double-sided PE-coated air release liner
Temp range	-28°C to 65°C
Thickness	50 microns
Adhesive	Grey, permanent, glidable solvent-based adhesive
Durability (unprinted)	Up to 9 years
Lamination	HP Auto Gloss or Matte Laminate
Ink compatibility	Latex, Eco-Solvent, Solvent & UV

Suitable for:

- Full and partial vehicle wraps
- Commercial fleets
- Compound curves
- Single-step channels



Automotive Laminates



HP Auto Gloss Laminate

Gloss laminate for fleet and vehicle graphics

Make sure you're covered. With HP Auto Gloss Laminate, your prints can withstand everyday wear and tear. It is recommended to partner with HP Auto Gloss Glide GP.

Liner	90 g/m ² clay coated liner
Temp range	-28°C to 65°C
Thickness	50 microns
Adhesive	Clear, permanent, solvent-based adhesive
Durability (unprinted)	Up to 9 years
Ink compatibility	Not printable

Suitable for:

- Overlamine solution

HP Auto Matte Laminate

Matte laminate for fleet and vehicle graphics

Make sure you're covered. With HP Auto Matte Laminate, your prints can withstand everyday wear and tear. It is recommended to partner with HP Auto Gloss Glide GP.

Liner	90 g/m ² clay coated liner
Temp range	-28°C to 65°C
Thickness	50 microns
Adhesive	Clear, permanent, solvent-based adhesive
Durability (unprinted)	Up to 9 years
Ink compatibility	Not printable

Suitable for:

- Overlamine solution

Premium Polymeric Film



HP Optimal Gloss Air GRP

High-performance polymeric gloss adhesive vinyl with grey repositionable adhesive

HP Optimal Gloss Air GRP Capture vibrant graphic detail, and display brilliant colour. From event signage to fleet graphics, achieve a high-quality look with this versatile, easy-to-handle, repositionable polymeric self-adhesive vinyl—ideal for a wide range of indoor and outdoor applications including flat fleet and vehicle applications. Easy installation with a lay-flat air release liner for quick installation. Help save time and gain efficiency with ICC profiles that help you get the colour you need quickly.

Liner	145 g/m ² , double-sided PE-coated air release liner
Temp range	-28°C to 65°C
Thickness	75 microns
Adhesive	Grey, repositionable, solvent-based adhesive
Durability (unprinted)	Up to 7 years
Lamination	HP Optimal Gloss or Matte Laminate
Ink compatibility	Latex, Eco-Solvent, Solvent & UV

Suitable for:

- Indoor and outdoor signage
- Commercial advertising
- Partial vehicle graphics
- Markings and decorations



Premium Polymeric Laminates



HP Optimal Gloss Laminate

Premium, polymeric clear, gloss overlamine

Make sure you're covered. With HP Optimal Gloss Laminate, your prints can withstand everyday wear and tear. Recommended to partner with HP Optimal Gloss Air GRP or HP Grip Gloss CP.

Liner	90 g/m ² clay coated liner
Temp range	-28°C to 65°C
Thickness	75 microns
Adhesive	Clear, permanent solvent-based adhesive
Durability (unprinted)	Up to 7 years
Ink compatibility	Not printable

Suitable for:

- Overlamine solution

HP Optimal Matte Laminate

Premium, polymeric clear, matte overlamine

Make sure you're covered. With HP Optimal Matte Laminate, your prints can withstand everyday wear and tear. Recommended to partner with HP Optimal Gloss Air GRP or HP Grip Gloss CP.

Liner	90 g/m ² clay coated liner
Temp range	-28°C to 65°C
Thickness	75 microns
Adhesive	Clear, permanent solvent-based adhesive
Durability (unprinted)	Up to 7 years
Ink compatibility	Not printable

Suitable for:

- Overlamine solution

Intermediate Polymeric Film



HP Prime Gloss Air GP

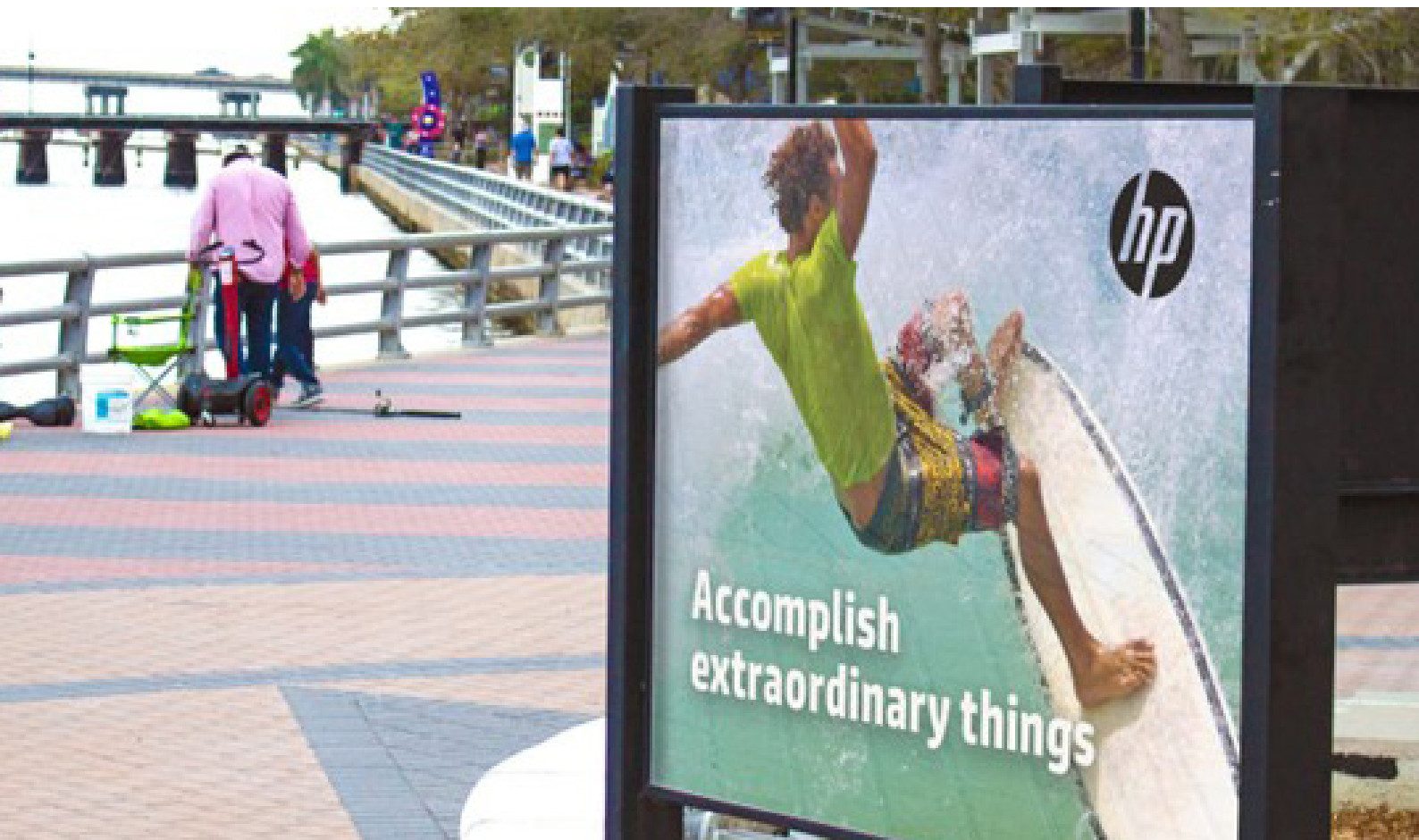
Polymeric adhesive vinyl with grey permanent adhesive

HP Prime Gloss Air GP is a high-gloss, polymeric adhesive vinyl offers outstanding image quality and “pop.” The grey permanent adhesive is opaque for maximum coverage. This vinyl installs easily with a lay-flat air release liner for fast installation. Help save time and gain efficiency with ICC profiles that help you quickly get the colour you need, ideal for a wide range of indoor and outdoor applications.

Liner	145 g/m ² , double-sided PE-coated air release liner
Temp range	-28°C to 65°C
Thickness	75 microns
Adhesive	Grey, permanent, water-based adhesive
Durability (unprinted)	Up to 5 years
Lamination	HP Prime Gloss or Matte Laminate
Ink compatibility	Latex, Eco-Solvent, Solvent & UV

Suitable for:

- Indoor and outdoor signage
- Commercial advertising
- Partial vehicle graphics
- Markings and decorations



Intermediate Polymeric Laminates



HP Prime Gloss Laminate

Polymeric clear, gloss overlaminate

Make sure you're covered. With HP Prime Gloss Laminate, your prints can withstand everyday wear and tear. It is recommended to partner with HP Prime Gloss Air GP.

Liner	90 g/m ² clay coated liner
Temp range	-28°C to 65°C
Thickness	75 microns
Adhesive	Clear, permanent solvent-based adhesive
Durability (unprinted)	Up to 5 years
Ink compatibility	Latex, Eco-Solvent, Solvent & UV

Suitable for:

- Overlaminate solution

HP Prime Matte Laminate

Polymeric clear, matte overlaminate

Make sure you're covered. With HP Prime Matte Laminate, your prints can withstand everyday wear and tear. It is recommended to partner with HP Prime Gloss Air GP.

Liner	90 g/m ² clay coated liner
Temp range	-28°C to 65°C
Thickness	75 microns
Adhesive	Clear, permanent solvent-based adhesive
Durability (unprinted)	Up to 5 years
Ink compatibility	Latex, Eco-Solvent, Solvent & UV

Suitable for:

- Overlaminate solution

Hi-Tack Film



HP Grip Gloss CP

Polymeric high-tack adhesive vinyl for hard-to-stick surfaces

HP Grip Gloss CP—with an aggressive, high-tack clear adhesive, is the ideal choice when mounting to demanding low surface energy plastics and powder-coated metal substrates. Save time during installation with a double-sided, lay-flat liner for easy installation. Help save time and gain efficiency with ICC profiles that help you quickly get the colour you need for a wide range of indoor and outdoor applications.

Liner	130 g/m ² , double-sided PE-coated silicone paper
Temp range	-28°C to 65°C
Thickness	75 microns
Adhesive	Permanent, high-tack solvent-based adhesive
Durability (unprinted)	Up to 7 years
Lamination	HP Optimal Gloss or Matte Laminate
Ink compatibility	Latex, Eco-Solvent, Solvent & UV

Suitable for:

- Indoor wall decorations
- Commercial advertising
- Low-energy surfaces
- Powder-coated substrates



Window Film



HP Vision Etch CP

Premium polymeric translucent matte window vinyl

Create decorative window graphics with HP Vision Etch CP, a translucent, matte calendared adhesive vinyl for clean, dry window surfaces. This printable film provides an etched, engraved effect on windows. Help save time and gain efficiency with ICC profiles that help you quickly get the color you need—ideal for a wide range of window décor applications.

Liner	135 g/m ² clay coated liner
Temp range	-28°C to 65°C
Thickness	80 microns
Adhesive	Clear, permanent, water-based adhesive
Durability (unprinted)	Up to 5 years
Ink compatibility	Latex, Eco-Solvent, Solvent & UV

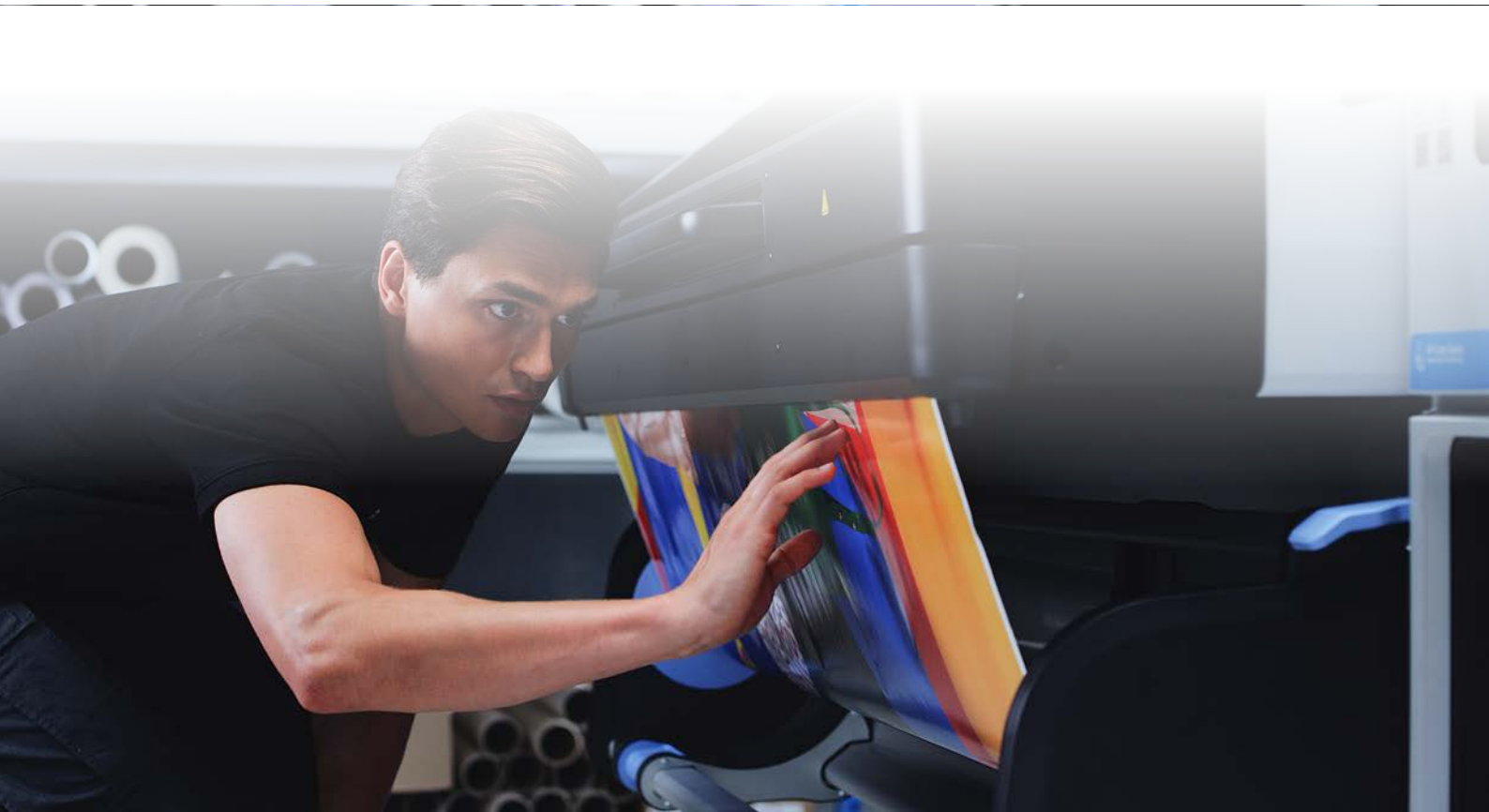
Suitable for:

- Glass and mirror decoration
- Glass conspicuity
- Architectural enhancement
- Interior design applications



HP Large Format Printing Materials

The complete solution



Distributed by:

Spandex 

inspiring creativity

www.spandex.fi

www.spandex.ee